



SECURITY SYSTEM

THAT ALLOWS FOR COMPLETE SYSTEM CONTROL



ids

IN PARTNERSHIP WITH
OPTEX

PRODUCT GUIDE



COMPLETE SECURITY SOLUTIONS AT WWW.REGALSECURITY.CO.ZA

WIRELESS



Onyyx wireless security system

Onyyx^{lite} is a wireless 20 device security system that allows for complete system control via the **Onyyx** smart App or a keyring remote.

Compatible with a full range of both indoor and outdoor IDS and OPTEx wireless detectors. **Onyyx^{lite}** is designed to meet your needs in a multitude of scenarios.

Revolutionary in both technology and design, **Onyyx^{lite}** is both easy to install and configure.

Onyyx^{lite} can be linked to the **hypp** platform for control room monitoring.

Features

App control

- Arm, disarm and bypass zones from the mobile App
- Real time notification of events
- Fully customisable to suit your requirements
- QR code scanning allows for quick installations

Fully wireless

- Full range of wireless indoor and outdoor detectors and beams.
- 2-Way wireless range of up to 600m.
- Fully supervised signal strength and battery status monitoring.

Mobile devices

- Compatible with Android, IOS or Huawei device's

Connectivity

- Wi-Fi 2.4 Ghz with Dual Sim LTE / 2G fallback
- Connects to your local monitoring provider through **hypp**

Battery back up

- Up to 12-hour battery life on **Onyyx** HUB.
- Up to 24-month battery life on wireless sensors



WIRELESS

IDS Onyyx Starter Kit

CP94

Fully Wireless alarm solution includes:

- Hub Controller
- MotionSense with bracket
- DoorSense
- Remote Transmitter



WIRELESS

IDS Onyyx Remote

SW157-9

Features:

- Bi-directional communication
- User friendly icons
- Up to 200m line of sight range
- Two-way wireless transmission (868Mhz)
- Panic button fixed - glow in the dark

The 806 is the latest next generation alarm system designed for small homes and businesses. This 8 zone solution is based on 25 years of experience of providing reliable, feature rich, user friendly, and value for money security solutions. For added installation convenience, the 806 now supports an optional 8 zone wireless receiver module that supports the full range of XWave OPTEX detectors, adding additional installation convenience and speed, with the benefit of installing detectors in the best position for the best detection and reliability.



KITS

806 Wired solution

KT16

Kit includes:

- 806 Control panel
- 8 Zone LED keypad
- 806 24V DC PSU 1.5A
- Siren 15W
- IDS 12V 7AH Battery
- Magnetic switches - white
- Panic button fixed - glow in the dark
- OPTEX RX Core Saver wired indoor detector



KITS

806 Wired solution

KT16-1

- IDS 806 Base kit
- IDS MotionSense wireless indoor sensor
- Panic button fixed - glow in the dark
- IDS DoorSense - WHITE
- XWave 2 Wireless Module



KITS

Wireless Serial solution

KT16-3

Kit includes:

- X64 Serial control panel
- XSeries - Curve series LCD keypad - with multi language support
- DS 24VDC power supply for 806 & XSeries
- IDS 12V 7AH Battery sealed lead acid
- Siren 15W
- XWave2 Bus wireless zone HUB
- IDS MotionSense wireless indoor sensor
- Panic button fixed - glow in the dark



KITS

X64 Wired Serial solution

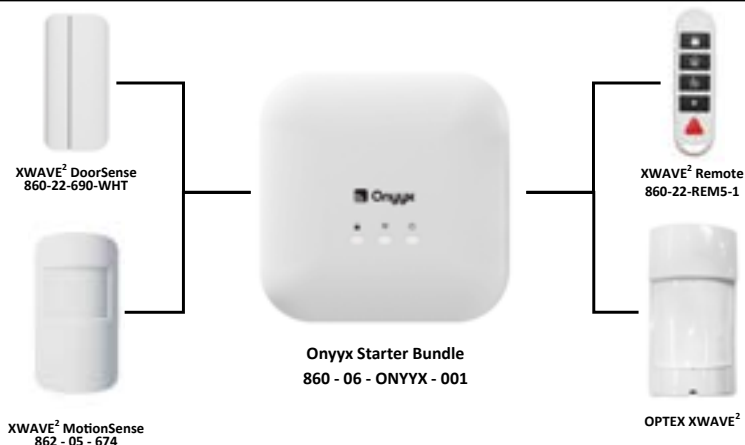
KT16-2

Kit includes:

- X64 Serial control panel
- XSeries - Curve series LCD keypad - with multi language support
- 24VDC 1.5 Amp power supply
- IDS 12V 7AH Battery sealed lead acid
- Siren 15W
- Magnetic switches - white
- Panic button fixed - glow in the dark
- Panic button fixed - glow in the dark



DESIGNED
TO MEET YOUR
NEEDS



806 Hybrid solution / 8 Zone alarm system

The 806 is the latest next generation alarm system designed for small homes and businesses. This 8 zone solution is based on 25 years of experience of providing reliable, feature rich, user friendly, and value for money security solutions. For added installation convenience, the 806 now supports an optional 8 zone wireless receiver module that supports the full range of XWave OPTEX detectors, adding additional installation convenience and speed, with the benefit of installing detectors in the best position for the best detection and reliability.

8 ZONE



806 8 Zone control panel

CP46-6

Features

- 8 Programmable zones (wired or wireless)
- 5 On-board programmable outputs
- 1000 Event log
- Optional zone tamper identification
- Up / downloadable (direct USB interface or GSM using **hypp**)
- 24VDC Power supply



LED

806 LED keypad

CP48-4

Features

- Modern design LED keypad
- One button arming keys (Away & Stay)
- Easy 4 wire connection to the control panel
- Pre-programmed Status LED output
- Dedicated Panic input zone, creating a ninth zone

MODULES

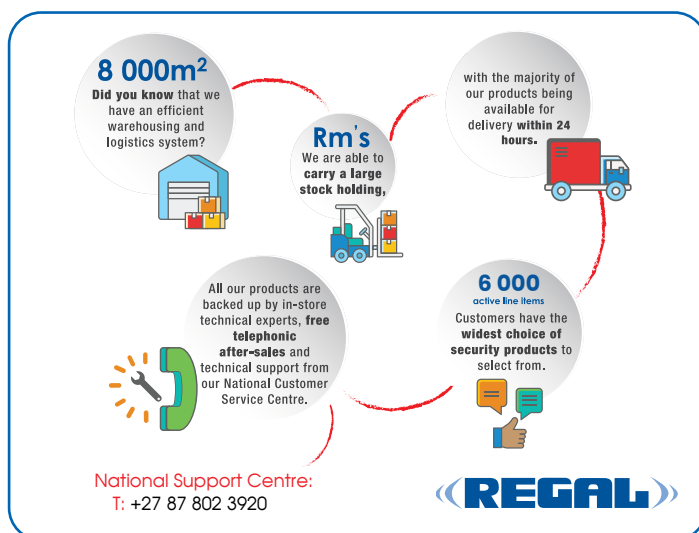


hypp AppConnectIP

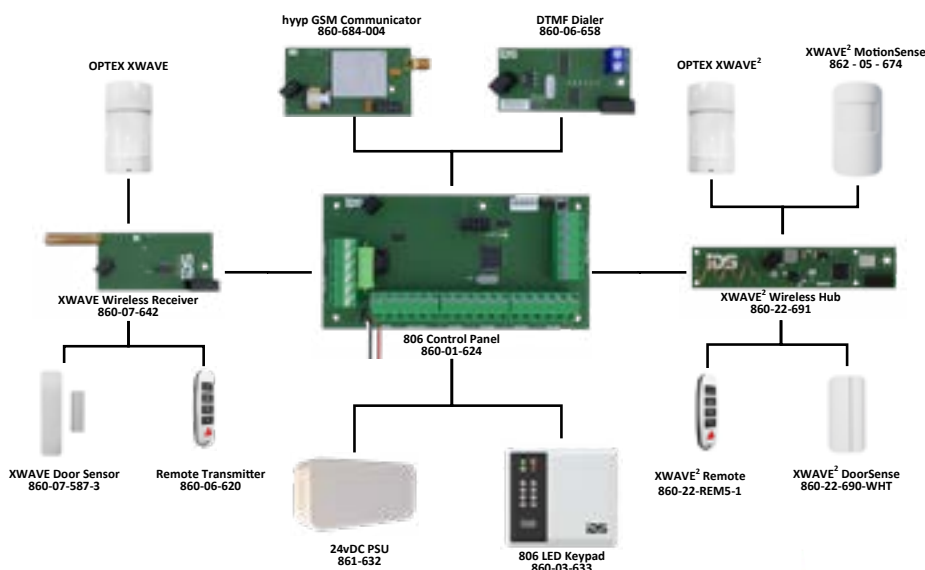
CP62-14 Connects to local Internet

Features

- Connects to local Internet
- No monthly subscription for App
- WPS Router required for Wi-Fi



ALARM SYSTEM
DESIGNED FOR
SMALL HOMES
AND BUSINESSES



IDS XSeries alarm control panels are the ideal security solution for residential and commercial environments, with a proven reputation for reliability and providing exceptional value in the industry. Offering an innovative range of wireless hybrid expansion, keypads and add-on modules, it is the most versatile and cost effective security system in the market place today.



8-64 ZONE

IDS X64 Serial control panel

CP51-1 - 8 Zones expandable to 64 zones

Features

- X64 - 8 Zones expandable to 64
- 5 Outputs expandable to 57
- Hybrid
- 8 Partitions
- 1000 Event log
- Optional zone tamper identification
- Up / downloadable (direct USB interface or GSM using **hyyp**)
- 24VDC Power supply



CHARGER

IDS - Rapid Charger Kit for Lead acid and Gel Batteries Only

PS86-6

Features

- Rapidly charge your Lead acid and Gel batteries with a 2A constant output.



TOUCH

Touch Series LCD keypad

CP52-4

Features

- Touch LCD keypad
- Up to 8 keypads per system
- Dedicated panic button
- Keypad tone selectable
- Programmable zone input per keypad
- Renowned one-button arming
- User programmable stay, buzz and chime profiles
- Easy cross partition access



XWAVE²

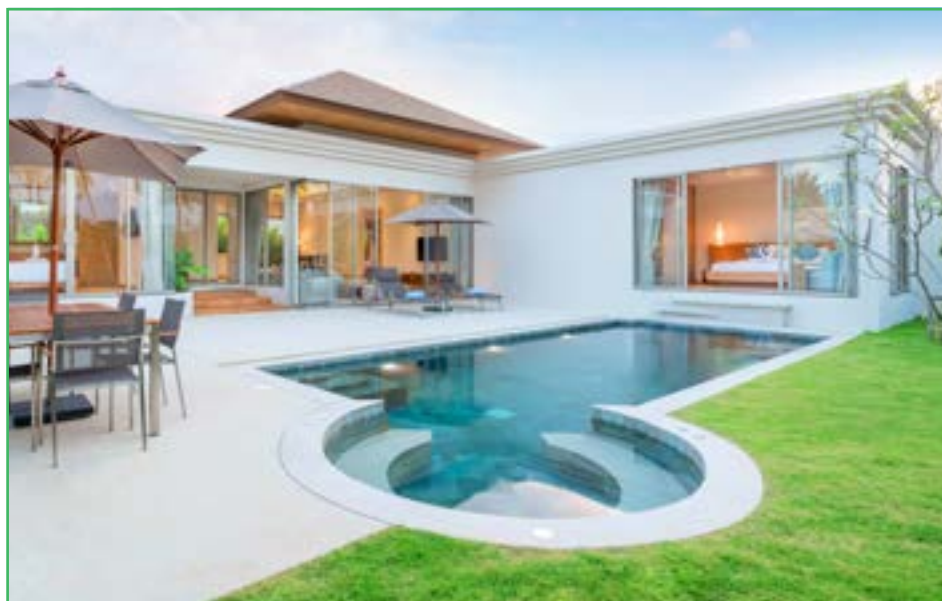
REMOTE

XWave² 5-button remote

SE157-5

Features

- XWave² bi-directional communication
- Multi-colour LED indicates control panel status
- Works with XWave2 wireless hub
- 200m Line of sight range
- 868Mhz



Smart Security Solutions

- hyyp Smart phone app control
- OPTEx wireless optional add-on
- 2 Year exchange warranty
- App automation control

XWave², in partnership with OPTEX, offers the latest in bi-directional wireless technology. Operating in the less congested 869MHz band, it ensures signal acknowledgment to confirm message delivery, by utilizing clear channel assessment and encryption to avoid message tampering. Due to ultra-short transmission times and marshalling of status responses by the HUB, 64 wireless zones can be hosted in close confines. Lost or tampered detectors are picked up in minutes due to superior supervision algorithms.

XWAVE²

HUB



XWave² Bi-directional wireless HUB

CP63-2

Features

- X64 - 4 HUB, 64 detectors
- Two-way supervision
- RF Jamming supervision
- Approximate range of 150m between detectors and receiver
- Intelligent bi-directional remotes with system status
- Home automation control
- Programming is done via the XSeries keypad or IDSwift2
- Auto code learning
- 2 On-board outputs

XWAVE²

MODULES



XWave² Input / output module

CP63-3

Features

- Wireless bi-directional communication
- One 10A relay output
- Two zone inputs
- Fully supervised

EXPANDER



XSeries 8 Zone plug in expander module

CP53

Features

- Zone expansion for zone 9 to 16
- 8 Wired, end-of-line supervised zone inputs
- Small footprint, easy install, plugs directly onto the control panel

EXPANDER



XSeries 8 Zone bus expander module

CP64-4

Features

- 8 Zone bus expansion module (Max 6 per system)
- 8 Wired, end-of-line supervised zone inputs
- 2 Onboard programmable outputs
- Optional double end-of-line zone supervision
- Active monitoring of power supply (AC fail, battery and fuse)

ISOLATOR

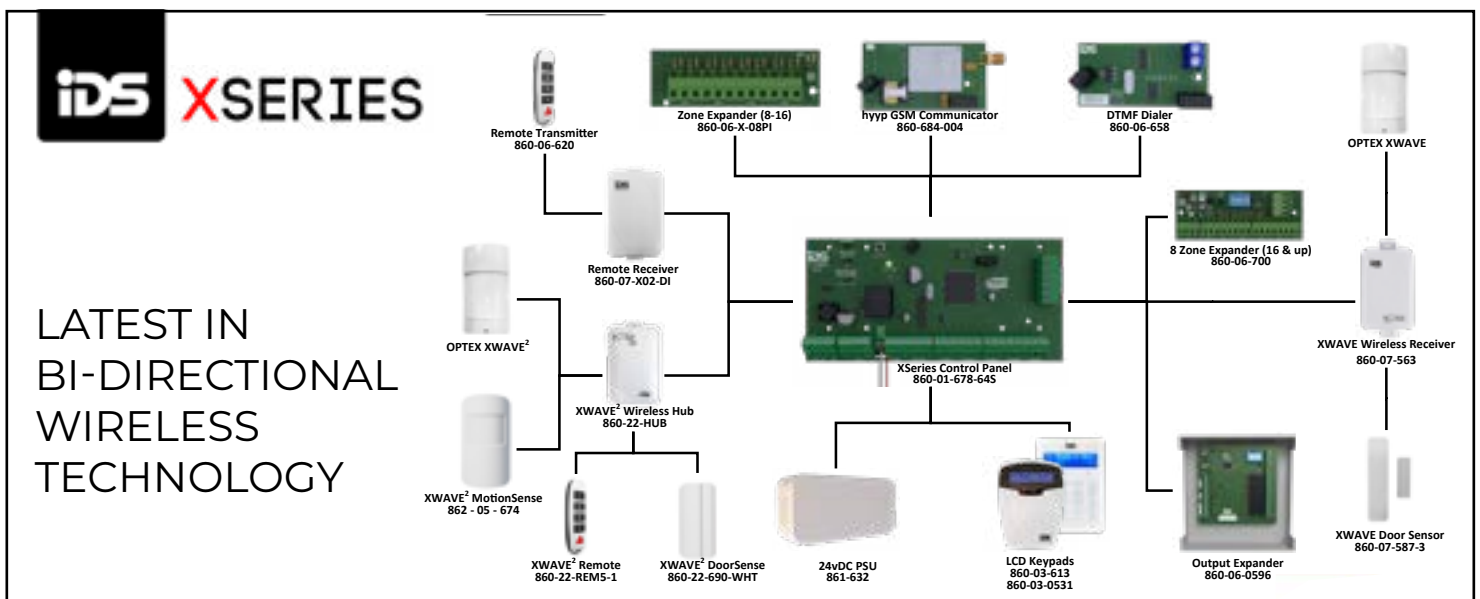


XSeries RS485 Bus isolator / repeater

CP62-2

Features

- Protect peripherals from surges on the key-bus caused by "ground loops"
- Provide 1kV optical isolation
- Will extend the range of key-bus signals



Accessories & modules

IDS XSeries alarm control panels are the ideal security solution for residential and commercial environments, with a proven reputation for reliability and providing exceptional value in the industry. Offering an innovative range of wireless hybrid expansion, keypads and add-on modules, it is the most versatile and cost effective security system in the market place today.



OUTPUTS

XSeries output expander

CP64-2

Features

- 8 X 1 Amp relay outputs
- Provides power / battery / fuse failure monitoring
- Multiple partition armed / alarm status
- Mimic panels and zone follower outputs
- Home automation control and alarm triggers for DVRs



USB CABLE

IDS USB Direct interface cable

CP55

Features

- Connect directly to any XSeries and 806 control panel using the simple interface, to upgrade firmware
- Download and amend programming
- Download event logs, and change panel status.



USB CABLE

IDS DTMF Radio interface plug-in module

CP55-3

Features

- The IDS DTMF Radio Interface module is a stackable board for the new generation IDS alarm system. The IDS DTMF Radio Interface module communicates to other DTMF communication devices that transmit signals from the alarm system to the security companies control room, via DTMF tones.



MODULES

IDS 2 channel receiver

SW195-5

Features

- Zone expansion for zone 9 to 16
- 8 Wired, end-of-line supervised zone inputs
- Small footprint, easy install, plugs directly onto the control panel

CP62-16

hyyp LTE Plug-on-Communicator

CP62-16

Features

- a

CP62-17

hyyp LTE Serial Communicator

CP62-17

Features

- a

VALUE ADDED SERVICES



«REGAL»

www.regalsecurity.co.za

Accessories & modules

IDS XSeries alarm control panels are the ideal security solution for residential and commercial environments, with a proven reputation for reliability and providing exceptional value in the industry. Offering an innovative range of wireless hybrid expansion, keypads and add-on modules, it is the most versatile and cost effective security system in the market place today.



POWER SUPPLY

IDS 24VDC power supply for 806 & XSeries

CP64-2

Features

- 24V DC output
- 1.5A current at 55 °C
- Compact design.
- LED to indicate if power supply is on



PIR

XGuard wireless indoor PIR

BD59

Features

- 9 x 9 Meter detection range
- 100° Wide angle
- XWave 433Mhz wireless
- Spherical lens and sealed optical design



ENCLOSURE

IDS Alarm panel plastic enclosure

CP47-9

Features

- Aesthetically pleasing design
- Robust ABS enclosure, fully recyclable plastic
- RF Transceivers can be mounted within
- Knockout cable entry points compatible with 20mm electrical conduit
- Ergonomically enhanced design for optimal access



BEAMS

IDS Quad Outdoor Beam

BD83-5

Features

- Quad active infrared beams
- Excellent immunity to fog and mist
- Response time of 50-700msec
- Sensitivity monitoring output terminal
- 10.3-28Vdc (100mA)
- 3 year warranty



BATTERY PACK

AA Battery pack with connectors

BA26-2

Features

- AA Battery pack for OPTEX low-current detectors.



Optex intrusion detection products have the flexibility to cater to your every demand.



SECURITY SYSTEM INDOOR AND OUTDOOR

IDS AND OPTEX

Beams

IDS XSeries alarm control panels are the ideal security solution for residential and commercial environments, with a proven reputation for reliability and providing exceptional value in the industry. Offering an innovative range of wireless hybrid expansion, keypads and add-on modules, it is the most versatile and cost effective security system in the market place today.



BEAM

IDS 4 Beam IR barrier beam set (60m)

BD114-1

Features

- 70cm x 6cm (10m Through to 100m)
- Requires 2 adjacent beams to be triggered simultaneously
- Photoelectric infrared beams, difficult to crawl under or jump over
- Gravity switch for anti tilt tamper- can adjust 180°
- Excellent false alarm immunity to rain, fog, white light & RF
- 3 year warranty



BEAM

IDS 4 Beam IR barrier beam set (100m)

BD114-2

Features

- (10m Through to 100m)
- Requires 2 adjacent beams to be triggered simultaneously
- Photoelectric infrared beams, difficult to crawl under or jump over
- Gravity switch for anti tilt tamper- can adjust 180°
- Excellent false alarm immunity to rain, fog, white light & RF
- 3 year warranty



BEAM

IDS 6 Beam IR barrier beam set (10m)

BD114-2

Features

- (10m Through to 100m)
- Requires 2 adjacent beams to be triggered simultaneously
- Photoelectric infrared beams, difficult to crawl under or jump over
- Gravity switch for anti tilt tamper- can adjust 180°
- Excellent false alarm immunity to rain, fog, white light & RF
- 3 year warranty



BEAM

IDS 6 Beam IR barrier beam set (30m)

BD115-1

Features

- 117cm x 4cm (10m Through to 100m)
- Requires 2 adjacent beams to be triggered simultaneously
- Photoelectric infrared beams, difficult to crawl under or jump over
- Gravity switch for anti tilt tamper- can adjust 180°
- Excellent false alarm immunity to rain, fog, white light & RF
- 3 year warranty



BEAM

IDS 6 Beam IR barrier beam set (60m)

BD115-2

Features

- 117cm x 4cm (10m Through to 100m)
- Requires 2 adjacent beams to be triggered simultaneously
- Photoelectric infrared beams, difficult to crawl under or jump over
- Gravity switch for anti tilt tamper- can adjust 180°
- Excellent false alarm immunity to rain, fog, white light & RF
- 3 year warranty



BEAM

IDS 6 Beam IR barrier beam set (100m)

BD115-3

Features

- 117cm x 4cm (10m Through to 100m)
- Requires 2 adjacent beams to be triggered simultaneously
- Photoelectric infrared beams, difficult to crawl under or jump over
- Gravity switch for anti tilt tamper- can adjust 180°
- Excellent false alarm immunity to rain, fog, white light & RF
- 3 year warranty



BEAM

IDS 6 Beam IR barrier beam (60m) outdoor

BD116-2

Features

- 210cm x 6cm (10m Through to 100m)
- Requires 2 adjacent beams to be triggered simultaneously
- Photoelectric infrared beams, difficult to crawl under or jump over
- Gravity switch for anti tilt tamper- can adjust 180°
- Excellent false alarm immunity to rain, fog, white light & RF
- 3 year warranty



BEAM

IDS 10 Beam IR barrier beam set (100m) outdoor

BD116-3

Features

- 117cm x 6cm (10m Through to 100m)
- Requires 2 adjacent beams to be triggered simultaneously
- Photoelectric infrared beams, difficult to crawl under or jump over
- Gravity switch for anti tilt tamper- can adjust 180°
- Excellent false alarm immunity to rain, fog, white light & RF
- 3 year warranty

XWAVE²

FTN



XWave² Wireless
BD63-5 5x1m

OPTEX FTN detectors

Features

- Outdoor low mount 5 x 1m
- Built-in 90° horizontal bracket
- Dual element Pet PIR
- IP55 and UV resistant ASA body
- Operating temperature: -20°C to +60°C
- Intelligent detection logic
- Pet tolerance
- SMDA Logic
- Active IR digital anti-masking*

XWAVE²

WXL



XWave² Wireless
BD70-9 12m 180°
BD70-13* 12m 180°

OPTEX WXL detectors

Features

- Outdoor low mount 12m 180° wired or wireless detector
- Individual detection area setting (left and right)
- Self-learning IR digital anti-masking function
- Individual left (and / or) right alarm output (wired version only)
- Flexible range adjustment
- Secure housing
- Double conductive shielding
- SMDA Logic with anti sway
- Optional active anti-masking*

XWAVE²

VXL



XWave² Wireless
BD60-5 12x12m
BD60-6* 12x12m
BD60-7* 12x12m

OPTEX VXL detectors

Features

- Outdoor low mount 12x12m wireless detector
- 5 Levels of detection length adjustment
- 7 Horizontal area adjustments
- Double conductive shielding
- Advanced temperature compensation logic
- SMDA logic for environmental noise immunity, with efficient energy management
- Optional dual-technology, anti-masking*

XWAVE²

INFRARED



XWave² Wireless
BD64-5 - 200TNR
60m Dual Beam

OPTEX Active infrared beams

Features

- Interruption period - variable between 50, 100, 250,
- 500msec (4 steps)
- Triple tamper functions
- 99% Beam blocking stability
- High grade aspherical lens
- Battery saving timer
- D.Q. Circuit (environmental disqualification)
- Long life battery operation (with 4 SAFT LSH20 batteries / not included)

XWAVE²

HX



XWave² Wireless
BD62-9* 12mx85°

OPTEX HX detectors

Features

- 3m High mount outdoor angle detector
- Multiple pattern detection area technology
- Pyro-element intelligent and logic prevents false alarms caused by small animals
- IP55 and UV resistant ASA body
- Dual signal processing circuit automatically adjusts detection sensitivity preventing missed alarms in hostile environments
- Wide angle and long distance options
- Vegetation sway analysis logic

XWAVE²

WLX



XWave² Wireless
BD61-7 12x15m
BD61-8 24x2m

OPTEX WLX detectors

Features

- 12m wide angle or 24m corridor
- High mount or low mount outdoor detector
- Selectable detection patterns (pet alley or multi-level)
- Area-masking strips
- Selectable pulse count

XWAVE²

WXS



XWave² Wireless
BD61-4* 12m / 180 °

OPTEX WXS detectors

Features

- Outdoor high or low mount wired or wireless detector
- Individual detection area setting (left and right)
- Individual left (and/or) right alarm output (wired version only)
- Flexible range adjustment
- Secure lock housing
- Double conductive shielding and SMDA logic with anti sway
- (Optional) Self learning anti-masking function*

XWAVE²

VXS



XWave² Wireless
BD70-7 12x12m

OPTEX VXS detectors

Features

- Outdoor low mount 12x12m wired or wireless detector
- Digital dual and triple layer detection
- Flexible range adjustment
- Active anti-masking
- Double conductive shielding
- Easy setup and installation
- Secure housing
- SMDA logic with anti sway
- Optional dual-technology, anti-masking*

XWAVE²

BXS



XWave² Wireless
BD86-7 24m
BD86-9 * 24m

OPTEX BXS detectors

Features

- Outdoor 24m long range PIR - 12m detection areas on both sides of detector
- Digital dual layer detection
- Flexible range adjustment
- Double conductive shielding
- Individual left (and/or) right alarm output (wired version only)
- Easy setup and installation
- Extreme high detection mode
- SMDA logic with anti sway
- Active anti-masking option*

XWAVE²

FX



XWave² Wireless
BD65-9 8-12mx360°

OPTEX Indoor 360° detectors

Features

- Ceiling Mount between 3.4m - 3.6m
- Spherical lens design
- Temperature compensation
- Noise reduction circuit
- Selectable pulse count: 2 or 4

CX



XWave² Wireless
BD65-4 45x2.4m / 21x21m

OPTEX CX detectors

Features

- High mount indoor detector
- Selectable detection patterns (pet alley or multi-level)
- Area-masking strips
- Selectable pulse count

XWAVE²

WNX



XWave² Wireless
BD65-5 12x12m

OPTEX Indoor long range detectors

Features

- Quad zone logic with digital target recognition for small animal tolerance
- Improved RF and white light immunity
- Advanced temperature compensation logic



WIRED

MotionSense

BD97-5

Features

- 15m Detection range with 95° angle
- Small pet friendly
- High EMI / EMC rejection
- Selectable 3k3Ω internal termination
- Selectable LED indication
- Selectable pulse count
- Configurable high/low sensitivity
- Screwless front access to terminals
- Optional swivel bracket

XWAVE²



WIRELESS

MotionSense

BD97-6

Features

- 15m Detection range with 95° angle
- Small pet friendly
- Two-way wireless transmission (868Mhz XWave²)
- 4 Year battery life
- Selectable LED indication
- Selectable pulse count
- High EMI / EMC rejection
- Screwless front access to battery
- Optional swivel bracket



BRACKET

Mounting bracket

BD97-9

Features

- Screwless attachment on detector
- Cable channels to hide wiring
- Ceiling / wall mount

Your one stop security shop

From our warehouse to your front door

- Delivery available across SA
- Quotes are customised for your business
- Secure payment gateway

www.regalsecurity.co.za | National Support Centre: 087 802 3920

CONTACT US

BRANCHES

Gauteng

Alberton:	087 537 4166
Balfour Park:	011 640 2288
Boksburg:	011 918 8505
Centurion:	012 653 0653
Edenvale:	011 453 0229
Fourways:	011 467 8817
Krugersdorp:	087 092 8100
Linden:	011 888 5666
Longmeadow:	011 454 8009
Lynnwood:	012 460 4550
Midrand:	011 312 7576
Montana:	087 802 3939
Rodepoort:	011 760 1149
Strijdom Park:	011 791 4770
Vanderbijlpark:	016 931 0116
Xavier (JHB South):	011 433 8943
Exports:	087 537 4100

Eastern Cape

East London:	043 735 4537
Gqeberha (PE):	041 364 3885

Free State

Bloemfontein:	051 447 6969
---------------	--------------

KwaZulu Natal

Durban:	031 263 0901
Pietermaritzburg:	087 803 4544
Pinetown:	031 701 3222

Mpumalanga

Emalaheni (Witbank):	013 656 4140
Mbombela (Nelspruit):	013 753 2831

Limpopo

Polokwane:	015 296 0531
------------	--------------

Western Cape

Bellville:	021 949 6330
George:	087 537 4155
Northgate:	021 510 1411
Ottery:	021 745 4989

CUSTOMER SUPPORT

Accounts

email
accounts@regalsecurity.co.za

Sales

email
sales@regalsecurity.co.za

National Support Centre

Tel: 087 802 3920
email
nsc.support@regalsecurity.co.za

Need Technical Support?

Call ANY Regal branch and dial 2

SCAN TO VIEW ALL REGAL BROCHURES



WhatsApp us on 081 475 5079

