



SECURI-PROD[®]

PRODUCT GUIDE 2023



CCTV



CC135

4 in 1 Camera with Working PIR

- 1080p AHD/CVI/TVI/CVBS
- 1/3 Pinhole Camera
- NO/NC and tamper output
- 12VDC



CC231

4 in 1 Camera in Smoke Detector Housing

- 1080p AHD/CVI/TVI/CVBS
- 3.7mm pinhole fixed board lens
- 12VDC



CC136

2MP (1080p) Analogue Pinhole Camera

- 1/2.9" Sony CMOS
- 2MP (1080p) Resolution
- 3.7mm pinhole lens
- 4-in-1 (AHD/TVI/CVI/CVBS)
- 12VDC



CC27-2

Camera Sound Module

- 6-12VDC
- 100-5500Hz
- 30 Square metre range



Monitor Brackets



CC30-1

Pan & Tilt Bracket

- Fits 13" to 27" Monitors
- Built in spirit level
- Holds 20kgs



CC31-2

Wall Mount Fixed Bracket

- Fits Monitors up to 27"
- Solid extra slim bracket
- Holds 25kgs



CC32-1

Wall Mount Fixed Bracket

- Fits 32" to 55" Monitors/TVs
- Solid extra slim bracket
- Holds 35kgs



Accessories



CN01

BNC Crimp Plug 6mm

- Crimp type 6mm
- BNC Male bayonet connector
- For use with RG59 75Ω coaxial cable



CN01-2

BNC Plug Screw Fixing

- BNC Male bayonet connector
- Screw in type 6mm



CN01-3

BNC Female 6mm Crimp

- BNC Female connector
- Crimp type 6mm
- For use with RG59 75Ω coaxial cable



CN02

BNC T Piece

- BNC T connector
- BNC Male to 2 BNC female
- For use with all 75Ω cabling systems



CN03

BNC In-Line Adaptor

- BNC female to female junction connector
- For use with all 75Ω cabling systems



CN03-1

BNC Female RCA Male Adaptor

- CCTV Adaptor for connection of CCTV cameras to RCA AV inputs on TVs, videos, etc.



CN03-2

BNC Male RCA Male Adaptor

- CCTV Adaptor for connection of CCTV cameras to RCA leads and AV connectors



CN03-3

BNC Male RCA Female

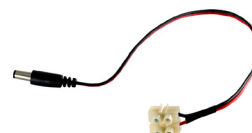
- CCTV Adaptor for connection of CCTV cameras to RCA leads and AV connectors



CN04

BNC Black Boots

- BNC Rubber black boots for crimp type 6mm BNC connectors
- Covers crimped ferrule, neatens and strengthens



CN04-3

DC Plug Lead Incl. Connector

- Moulded 2.1mm DC plug with lead
- Electrical connector block for easy connection to power leads
- 300mm Lead plug to connector

Accessories



CN04-4

4 Way Splitter with Connector Blocks

- 2.1 x 5.5mm Female power plug connector
- 4 x Connector blocks



CN04-1

DC Plug Incl. Terminal Connector Block

- Easier for camera installation, saves time with a more secure cable connection
- 2.1 x 5.5mm Female power plug connector
- Internal diameter of the plug: 2.1mm
- External diameter of the plug: 5.5mm
- Dimensions: 39(L) x 13(W) x 12(H) mm



CN04-5

DC Socket Incl. Terminal Connector Block

- Easier for camera installation, saves time with a more secure cable connection
- 2.1 x 5.5mm Female power plug connector
- Internal diameter of the plug: 2.1mm
- External diameter of the plug: 5.5mm
- Dimensions: 39(L) x 14(W) x 13(H) mm



CC50-1

Balun 1 Channel UTP Transceiver 2 Pack

- Transfer 1ch analogue HD video over Cat5e/6 UTP cable
- No power required
- Real time transmission: 720p/1080p video signal.
- HDCVI, HDTVI, AHD and Analogue Video



TL48-1

Crimping Tool - RJ45 Connector

- Crimping tool for 8 pin RJ45 connectors
- Dual stripping/cutting blades for 6mm and 12mm



TL48-2

Crimping Tool RJ11 / RJ12 / RJ45

- Ratchet crimping tool for RJ11/RJ12 / RJ45 connectors



HW22-1

Connector - RJ45 for CAT 5 Cable

- RJ45 8 Pin Ethernet connector for CAT5 cable



HW22-3

Connector Boot RJ45 Grey

- Grey rubber boot for RJ45 connector



HW22-4

Connector - RJ45 Back to Back Coupler (In-Line)

- RJ45 Back to Back Coupler (In-Line)



HW22-6 Connector CAT6

Connector Shielded RJ45 for STP

- Shielded RJ45 for STP cable
- HW22-7 Connector CAT5

Emergency Buttons



ES02

Emergency Button Latching Panic

- NO and NC contacts
- Positive action with UL listed microswitch
- Latches to ensure all activations attended to must be reset with key
- Plastic cover



ES04

Emergency Button NO/NC

- NO and NC contacts
- Suitable for gluing onto walls
- Rating: 0.5A at 12VDC



ES04-1 Luminous

Emergency Button NO/NC

- NO and NC contacts
- Suitable for gluing onto walls
- Rating: 0.5A at 12VDC



ES05

Emergency Button NO/NC White

- Clip on cover conceals screws (or suitable for gluing onto walls)
- 4 Knock-outs for cable inlets
- Rating: 0.5A at 12VDC

Call Points



FR02

Call Point

- Mechanical emergency door release switch
- Green surface mount box with conduit knockout
- Manual key resettable actuator
- Break-glass activation
- With hinged clear plastic protective cover



FR02-1

Call Point - Resettable

- Green Material: ABS fireproof release material
- Current rating: 2A at 36VDC maximum
- Recommended Operating Voltage: 12VDC
- Dual Relay



FR03

Call Point

- 2 Piece manual emergency fire red call point
- Manual key resettable actuator
- Break-glass activation
- With hinged clear plastic protective cover



FR03-1

Call Point - Resettable

- 2 Piece manual emergency fire red call point
- Manual key resettable actuator
- Push point activation
- With hinged clear plastic protective cover
- Dual Relay

SECURI-PROD KEYPAD LK192-1



SP RFID and PIN Standalone /Wiegand Reader Slimline 2 Relays 2000 Users

- Operating voltage: 12VDC
- 2000 Users - 1000 on relay 1 and 1000 on relay 2
- Wiegand and standalone option
- Card or Pin or Card and Pin
- IP65
- Dimensions: 130(L) x 58(W) x 24(D) mm

Locks & Brackets



LK117

Maglock 136kg

- 136kg Holding force
- Operating voltage 12VDC
- Current draw 300mA / 150mA
- MOV surge protection
- Fail-safe type
- CE approved
- Dimensions: 170(L) x 40(W) x 22(D) mm



LK118

Maglock with LED 272kg

- 272kg Holding force
- Dual voltage 12 and 24VDC
- Current draw 500mA / 250mA
- MOV surge protection
- Fail-safe type
- Monitored with LED, Hall effect IC and NO/NC relay
- CE approved
- Dimensions: 250(L) x 41(W) x 26(D) mm



LK119

Maglock with LED 544kg

- 544kg Holding force
- Dual voltage 12 and 24VDC
- Current draw 500mA / 250mA
- MOV surge protection
- Fail-safe type
- Monitored with LED, Hall effect IC and NO/NC relay
- CE approved
- Dimensions: 265(L) x 66(W) x 40(D) mm



LK126

Maglock Stainless Steel 360kg Outdoor

- Dual voltage: 12/24VDC, 500mA/250mA
- Monitored with reed sensor only, NO/NC dry contact
- MOV surge protection
- CE approved
- Dimension: 220(L) x 46(W) x 29(D) mm



LK127

Maglock Stainless Steel 545kg Outdoor

- Dual voltage: 12/24VDC, 500mA/250mA
- Monitored with reed sensor only, NO/NC dry contact
- MOV surge protection
- CE approved
- Dimension: 220(L) x 62(W) x 43(D) mm



LK117-1

ZL Bracket

- For use with SP 136kg Maglock (LK117)



LK118-1

ZL Bracket

- For use with SP 272kg Maglock (LK118)



LK119-1

ZL Bracket

- For use with SP 544kg Maglock (LK119)



LK119-2

L Bracket

- For use with SP 544kg Maglock (LK119)



LK128

Z Bracket

- For use with LK126 and LK127 outdoor Maglocks



LK128-1

L Bracket

- For use with LK126 and LK127 outdoor Maglocks



LK120

Bolt Action Lock

- 12VDC Operation
- Operation current 900mA
- Holding current 350mA
- Fail safe type - power to lock
- Operation delay time: 0 sec, 2.5 sec, 5 sec, 9 sec
- Built-in delayed egress, control point



LK120-1

Surface Mount Bracket

- Surface mount housing for LK120
- Lock housing dimensions: 230(L) x 44 (W) x 44(D)mm
- Receptacle housing dimensions: 120(L) x 44(W) x 44(D) mm



LK121

Bolt Action Lock

- 12VDC Operation
- Operation current 900mA
- Holding current 350mA
- Fail-secure type - power to open
- Operation delay time: 0 sec, 3 sec, 5 sec, 9 sec
- Built-in delayed egress, control point



LK124-1

Dead Bolt Lock

- Suitable for 90° to 180° hollow metal or solid wooden doors
- Surface mount
- Adjustable lock time
- Power Supply: 12VDC
- Power consumption: 360mA (standby); 570mA (operation)
- Automatic current output control according to the door leaf position



LK125-1

Bolt Action Lock

- Working voltage: 12VDC
- Working current: Start: 1.2A
- Working: 200mA
- Hold open time - 0 seconds, 3 seconds or 5 seconds
- Coil type: continuous working type
- Security type: Fail-Safe
- Extension length of lock core: 15mm
- Face plate: Stainless steel



LK130

Shear-Lock

- Maximum shear force: 1200kg, maximum magnetic suction up to 5mm (@24VDC)
- Built-in micro controller with door open delay time and door position detection outputs
- Suitable for all types of 90° to 180° open aluminium or wooden doors
- Power Supply: 12/24VDC



LK132

Mini Mag Lock

- Fail-safe (power to lock) electric lock
- Power input: 12VDC / 150mA
- Low operating current: 150mA (@12VDC)
- Holding force (Max): 80kg / 12VDC



LK133

Door Holder

- Suitable for security door and all types of 90° doors
- Power saving function design
- Power Supply: 12VDC or 24VDC
- Adjustable Holding force: 145lbs (65kg)



LK133-1

Door Holder

- Dual voltage: 12/24VDC
- Adjustable holding force: 145lbs (65kg)
- Suitable for fire and all types of 90° doors
- Power-saving function design
- Two mounting methods - can be mounted on floor or wall

Door Loops



CN08

Door Loop Extendable Cord (White)

- Retractability ensures neatness where a long cord is required
- Anti-tamper contact
- 6 Core leads
- 87 x 24 x 12mm Junction boxes



CN22

Door Loop Armoured

- Flexible silver door loop
- 300mm Length
- 7mm Internal diameter



CN23

Door Loop Stainless Steel

- Flexible stainless steel door loop
- (L) 400mm, 9.5mm Inner diameter
- Ideal for large doors and swing gates

Door Openers



LK94-9

Automatic Door Opener

- Operating voltage: 220VAC
- Power consumption: 50W
- Max opening angle: 120°
- Opening time: 3-7s @ 90°
- Hold open time: 1-30s
- Door weight: 80kg
- Product weight: 6.5kg
- Dimensions: 540(L) x 82(W) x 95(H) mm



BD200

Microwave Sensor

- Power source voltage 12-24 VAC +/- 10%; 12-36 VDC
- Power source frequency 50-60 HZ
- Output retention time 0.5 second
- Temperature range -20 C to +55 C
- Dimensions: 121(W) x 80(H) x 52(D) mm

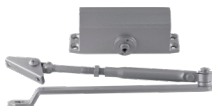


SW175

Foot Inductive Switch

- Supply power: 9-36 DC - 9-24V AC
- Maximum transmitting distance: 0.4m
- Done by NO/NC contact selection
- Appearance dimensions (controller) 175(L) x 185(W) x 57(H) mm

Door Closers



LK94

Medium Duty Door Closer

- Small body and compact design
- Economical solution
- Adjustable arm
- Suitable for internal aluminium and hollow doors (25-45kg)
- Hold open function



LK94-2

Heavy Duty Door Closer

- Cast aluminium housing with concealed adjustment screws
- Adjustable arm
- Suitable for heavier doors (40-65kg)



LK94-4

Medium Duty Door Closer

- Suitable for doors (25-45kg)
- 180 x 42 x 63mm
- Without Hold Open



LK94-5

Hold Open Arm

- For use with LK94-2
- Holds the door in fully open position
- Not suitable for Fire Doors - Check local regulations

Magnetic Contacts



MC01 NC Circuit

Flush Mounted Magnetic Contacts NC/NO

- For concealed mounting in wooden and metal frames
- Operating gap approximately 25mm for normally closed (NC) circuits
- Rated 0.2A 40V
- MC02 No Circuit



MC08 White

Surface Mounted Magnetic Contacts NC

- Large ferrite magnet
- Gap width: 22mm Take and 26mm Break
- Used in all conventional alarm installations
- Available in normally open
- MC10 Brown



MC31 NC Circuit

Magnetic Contacts Wide Gap

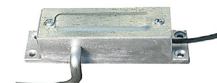
- Designed primarily for use with loosely fitted and misaligned doors and windows
- The magnet will operate from almost any direction
- Gap width: 35mm Take and 55mm Break
- MC32 No Circuit



MC26 NC Circuit

Roller Shutter Contacts

- Waterproof die-cast zinc constructed for surface mounting on garage floor
- A flexible 300mm stainless steel armour plate gives complete protection to cable
- 25mm Take and 55mm Break
- MC28 No Circuit



SW40 Left Hand Side

Roller Lever Switches

- Robust cast aluminium switch casing
- Mechanical NO and NC contacts
- LHS or RHS switching
- SW41 Right Hand Side

The modern doorman

Introducing an automatic door opener with interlocking function



REGAL

Your One Stop Security Shop



Power Supplies (PSUs)



LT19

16VAC 50VA 3Amp Protected

- Standalone transformer in housing with moulded plug and AC connector block
- 12/16VAC - 50VA, Output protected
- Input Voltage 220VAC @50Hz
- Terminal block for 12/16VAC connections



PS25

CCTV 24VAC 2Amp Transformer

- Input: 230VAC @50Hz
- Output: 24VAC, 2Amp
- Resettable thermal output fuse
- Lightning protection
- SABS Approved



PS30

16VAC 1.25A Plug-In Transformer

- Plug-in-type transformer in housing
- 16VAC 1.25A output
- Input voltage: 220VAC; 50Hz
- Terminal block for 16VAC connection



PS51

16VAC 40VA 2.5Amp Transformer

- Power supply with moulded DC lead and SA plug top
- Switch mode power supply
- 100-240VAC Input
- 12VDC / 2.5Amp output



PS40-1 2.5Amp

CCTV 12VDC PSUs

- Power supply with moulded DC lead and SA plug top
- Switch mode power supply
- 100-240VAC Input
- 12VDC
- PS65-1 4Amp



PS49-1

12VDC 3Amp Power Store

- 2 Outputs: 12VDC 3Amp max.
- Input voltage: 100-240VAC @50/60Hz
- Charge Current: 1.0Amp max.
- Metal housing dimensions: 203(H) x 163(W) x 74(D) mm
- AC fail relay and buzzer
- Recommended battery: 12V 8Ah (BA09-2 sold separately)



PS49-2

12VDC 5Amp Power Store

- Output voltage: 12VDC 5Amp
- Input voltage: 190-265VAC @50/60Hz
- Output short-circuit protection
- Metal housing dimensions: 295(H) x 198(W) x 90(D) mm
- 12V 17Ah (BA04-2 Battery sold separately)



PS49-3

Access Control 12VDC 3Amp Power Store

- Output voltage: 12VDC 3Amp with timer board
- Input voltage: 190-265VAC - 50/60Hz
- Adjustable timer 1 - 10sec
- Metal housing dimensions: 203(H) x 163(W) x 74(D) mm



PS64-1

CCTV 9 Way 12VDC 5Amp PSU

- 12VDC 5Amp switch mode power supply
- Input power 90-260VAC @50/60Hz
- 9 CCTV Camera connections rated 0.5Amp each
- With SA plug top and 300mm lead
- Lockable enclosure, grey epoxy coated finish



PS64-2

CCTV 9 Way 12VDC 9Amp PSU

- 12VDC 9Amp switch mode power supply
- Input power 100-240VAC @50-60Hz
- 9 CCTV Camera connections rated 1Amp each
- Metal housing dimensions: 203(H) x 203 (W) x 53(D) mm



PS64-3

CCTV 9 Way 12VDC 8Amp Power Store

- 12VDC 8Amp switch mode power supply
- Input power 90-260VAC @50-60Hz
- 9 CCTV Camera connections rated 0.8Amp each
- Metal housing dimensions: 355(H) x 190(W) x 83(D) mm
- With battery back-up (BA13-2 or BA09-2 Battery sold separately)



PS66

24VDC 5Amp Power Store

- Output voltage: 24VDC @ 5Amps max
- Input voltage: 190-265VAC @ 50-60Hz
- Output short circuit protection
- AC Fail alarm output
- Battery charge Current 2Amps
- Metal housing dimensions: 400(H) x 290(W) x 160(D) mm
- With battery back-up 2 x 17Ah (BA04-2 Batteries sold separately)



PS68

CCTV 10 Way 12VDC 10Amp PSU

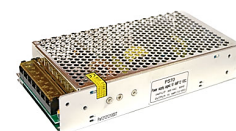
- 12VDC 10Amp switch mode power supply
- Input voltage 175 to 265VAC @50Hz
- Output: 12VDC 120 Watt
- 10 CCTV connections rated 1Amp each
- Dimensions: 235(L) x 205(W) x 52(D) mm



PS69

CCTV 18 Way 12VDC 20Amp PSU

- 12VDC 20Amp switch mode power supply
- Input voltage 175 to 65VAC @ 50Hz
- Output: 12VDC 240 Watt
- 18 CCTV connections rated 1.1Amp each
- Dimensions: 315(L) x 230(W) x 57(D) mm



PS70

Enclosed Power Supply 12VDC 10Amp

- 12VDC 10Amp switch mode power supply
- Input voltage 175 to 265VAC @ 50Hz
- 1 x 10Amp output @ 12VDC
- Metal cage
- Dimensions: 199(L) x 98(W) x 38(D) mm
- This power supply must be housed in a suitable enclosure with ventilation

Now with 2 Outputs & AC Fail Relay

PS49-1

Switches



SW02

**Push Button
NO/NC**

- NO and NC contacts
- Rating 0.5A at 12VDC
- Large button



SW03

**Bell Push Button
NO/NC**

- NO and NC contacts
- Rating 0.5A at 12VDC
- Large button with Bell decal



SW10 White

**Cut-Out Isolation
On-Off**

- Rating 70VAC/DC
- SW11 Brown



SW17

**Gate Push Button
Decal NO/NC**

- NO and NC contacts
- Rating 0.5A at 12VDC
- Large button with Gate decal



SW17-1

**Exit Push Button
Decal NO/NC**

- NO and NC contacts
- Rating 0.5A at 12VDC
- Large button with Exit decal



SW163

**Stainless Steel Infrared
Touchless Switch - 39mm**

- Operating voltage: 12 - 24VDC
- Current draw: 30mA
- Infrared no touch switch
- Contact: NO and NC
- Rated: IP65
- Adjustable door opening time: 0.5 - 20 seconds
- Adjustable proximity range: 3 - 10cm
- Strong and durable SUS304 steel body
- Diameter: 39mm



SW163-1

**Stainless Steel Infrared
Touchless Switch - 22mm**

- Operating voltage: 12 - 24VDC
- Current draw: 30mA
- Infrared no touch switch
- Contact: NO and NC
- Rated: IP65
- Adjustable door opening time: 0.5 - 20 seconds
- Adjustable proximity range: 3 - 10cm
- Strong and durable SUS304 steel body
- Diameter: 22mm



SW163-2

**Polycarbonate Fireproof
Infrared Touchless - 19mm**

- Operating voltage: 12 - 24VDC
- Current draw: 30mA
- Infrared no touch switch
- Contact: NO and NC
- Rated: IP65
- Adjustable door opening time: 0.5 - 20 seconds
- Adjustable proximity range: 3 - 10cm
- Polycarbonate, fireproof plastic body
- Diameter: 19mm



SW165

**No Touch
Exit Sensor**

- Input voltage: 12VDC
- NO/NC contact
- Fits standard 4 x 2 box



SW165-5

**Touch-to-Exit
Sensor**

- Input voltage: 12VDC
- Touch to exit
- NO/NC contact
- Dimensions: 56(W) x 86(H) x 20(D) mm



SW165-8

**No Touch Waterproof
Exit Sensor**

- Operating voltage: 12/24VDC
- Relay: NO/NC/COM
- Sensitive Distance: 3 - 15cm
- LED Indicator: Red (Standby) Green (Active)
- IP Rating: IP68
- Dimensions: 86(L) x 55(W) x 20(H) mm



SW168

**Slim-Line Push
Button**

- NO contact only
- Stainless steel finish
- Dimensions: 30(W) x 94(H) x 17(D) mm



SW168-1

**Slim-Line Button with
Illumination**

- Operating voltage: 12VDC
- NO/NC contact
- Stainless steel finish
- Dimensions: 30(W) x 94(H) x 32(D) mm



SW169

**Push-to-Exit
Button with Illumination**

- Operating voltage: 12VDC
- NO/NC contact
- Aluminium finish
- Dimensions: 52(W) x 88(H) x 32(D) mm



SW170

**Green Exit Button Including
Surface Mount Box**

- Contact: NO/NC
- Dimensions: 115(W) x 70(H) x 30(D) mm
- Indoor Use



SW171

**Recessed Door
Release Button**

- Plastic recessed release button
- NO/NC contact
- Dimensions: 88(W) x 88(H) x 25(D) mm



SW171-1

**Surface Mount Door
Release Button**

- Plastic surface mount release button with mounting base
- NO/NC contact
- Dimensions: 88(W) x 88(H) x 20(D) mm



SW172

**Surface Mount Push
Button NO**

- Surface Mount NO/COM Push Button
- Steel button, alloy body



SW173

**Surface Mount
Push Button NO and NC**

- Contact: NO/NC
- Dimensions: 115(W) x 70(H) x 30(D) mm
- Indoor Use



SW173-1

**Surface Mount Push
Button With Cover**

- Weather Resistant
- Contact: NO/NC

Detectors/Brackets

**BD132****Outdoor DT Detector**

- Dual technology (DT) - 2 PIR channels/1MW channels
- Pet immunity
- Anti-masking
- Trouble output and self-test
- Wall swivel
- Pet lens and 15m long range lens included
- **Optional 180° bracket available BD132-1**

**BD132-1****Bracket for BD132**

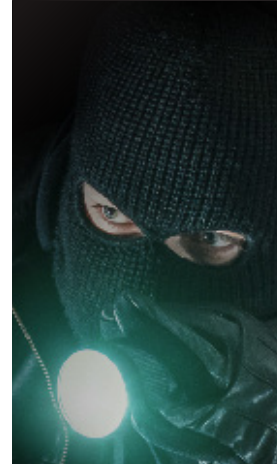
- Adjustable wall mount bracket for the BD132 outdoor DT detector
- Multiple horizontal angle adjustment (180°)
- Vertical adjustment (20°)
- Simple and easy to install and adjust

**BD122** 30metre**Dual IR Beams**

- Dual Infrared digital pulse beams requiring both beams interrupted simultaneously to generate an alarm
- Operating voltage: 13.8VDC
- Built in LCD Volt meter for quick alignment
- LED indicators for quick installation and walk-test
- NC or NO alarm relay output
- IP66 Rated
- **BD123 60m**
- **BD124 100m**

**BD252-4** 2 Beam 40metre**Strip Beams**

- Photoelectric Strip Beam requiring both beams to be interrupted simultaneously to generate an alarm
- Operating voltage: 13.8VDC
- Built in buzzer and LED for quick alignment
- 180° Alignment axis
- NC Alarm relay output
- IP55 Rated
- **BD254-3 4 Beam 30m**
- **BD256-3 6 Beam 30m**
- **BD256-7 6 Beam 70m**
- **BD258-3 8 Beam 30m**

INTRUSION
DETECTION

Sound Devices

**SD01****Rectangular Buzzer**

- 6 - 14VDC
- 100mm Lead attached
- 20mA Current drain
- Black

**SD02****Round Buzzer**

- 6 - 14VDC
- 100mm Lead attached
- 20mA Current drain
- Black

**SD13****Piezo Sounder**

- Buzzer - 3 tone
- Pulsating or continuous tone
- Typical current drain 27mA pulsating; 45mA continuous
- 90dB at 1m

**SD14****Piezo Sounder Tweeter**

- 12VDC, 150mA
- 100mm Lead attached
- Black

**SD17****Piezo Sounder White**

- 6 - 14VDC
- 100mm Lead attached
- 45mA Current drain

**SD22****Electronic Siren 15W**

- Combination 15W horn speaker with built-in siren driver
- Economical
- 6-12VDC Operation
- Typical current drain 600mA at 12VDC
- 108dB at 1m
- Weather resistant ABS plastic

**SD24****Electronic 6 Tone Siren 20W**

- Six tones selectable by jumper settings
- 20W horn speaker with built-in siren driver
- Economical
- 12VDC Operation
- Typical current drain 1.2A at 12VDC
- 108dB at 1m
- Weather resistant ABS plastic

**SD26****Electronic Cop Siren 30W**

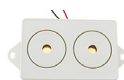
- Two tones selectable
- 30W horn speaker with built-in siren driver
- 12VDC Operation
- Typical current drain 1.2A at 12VDC
- Weather resistant ABS plastic

**SD27****Electronic 2 Tone Siren 30W**

- 30W horn speaker with built-in siren driver
- Selectable yelp sound or wail sound
- Adjustable mounting bracket
- 6 - 12VDC Operation
- Typical current drain 1.2A at 12VDC
- Weather resistant ABS plastic

**SD29****Quad Piezo (Maxi Bomb)**

- Piezo electric - hence high efficiency
- Typical current drain 130mA at 12VDC
- 6 - 12VDC Operation
- Polarity protected
- 118dB at 1m

**SD30****Dual Piezo (Mini Bomb)**

- Small, high intensity sounder
- Low current drain - typical drain 100mA at 12VDC
- Easily mounted with double sided tape or screws
- 6 - 12VDC Operation
- Polarity protected
- 105dB at 1m

**SD50****Red Strobe and Siren Combination**

- Input voltage: 12 to 14VDC
- Sound output: 110dB at 1m
- Fixed strobe and siren combination
- Suitable for use as a local fire strobe/siren
- Operating current: ± 250 mA at 12VDC

**SD51****Red Alarm Strobe and Siren Combination**

- Red strobe and siren combination
- Input voltage: 12 to 14VDC
- Sound output: 100dB at 1m
- Operating current: 200mA

**SD51-1****Blue Alarm Strobe and Siren Combination**

- Blue strobe and siren combination
- Input voltage: 12 to 14VDC
- Sound output: 100dB at 1m
- Operating current: 200mA



Alarms

Warning Lights

**WL30** Red**Strobe Light Large**

- Non-polarised power input
- High intensity, low current lamp
- Flashing rate 1/sec
- 6-12VDC Operation

**WL35** Red**Strobe Mini 12V Red**

- 12VDC Operation
- Current consumption: 50mA
- Weatherproof
- Materials: ABS and Polycarbonate
- Dimensions 7.7(D) x 4.5(H) cm

Fire Detectors

**FR22-1****Photoelectric Smoke Detector**

- Power supply: 12VDC
- Photoelectric sensor
- Red LED indicator
- High sensitivity
- Built in sounder gives a sound output of 85dB@3m
- Test button simulates smoke

**FR22-2****Photoelectric Smoke Detector**

- Power supply: 9VDC
- Photoelectric sensor
- Red LED indicator
- High sensitivity
- Built in sounder gives a sound output of 85dB@3m
- Test button simulates smoke



Enclosures

CAMERA MOUNT ENCLOSURES

**CA21****Inspection Box or Camera Mount Enclosure**

- Dimensions: 115(L) x 115(W) x 48(H) mm
- 20 or 25mm knockouts
- ABS thermoplastic polymer
- White

**CA21-5****Inspection Box or Camera Mount Enclosure**

- Dimensions: 115(L) x 115(W) x 48(H) mm
- 20 or 25mm knockouts
- ABS thermoplastic polymer
- Black

**CA21-1****Inspection Box or Camera Mount Enclosure**

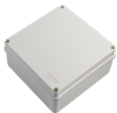
- Dimensions: 161(L) x 161(W) x 48(H) mm
- 20 or 25mm knockouts
- ABS thermoplastic polymer
- White

**CA21-2****Enclosure 100 x 100 x 50mm**

- Dimensions: 100(L) x 100(W) x 50(H) mm
- Plastic

**CA22-1****Enclosure 150 x 110 x 70mm**

- Dimensions: 150(L) x 110(W) x 70(H) mm
- Plastic

**CA59****Enclosure 150 x 150 x 70mm**

- Dimensions: 150(L) x 150(W) x 70(H) mm
- Plastic

**CA20-1****Enclosure 190 x 140 x 70mm**

- Dimensions: 190(L) x 140(W) x 70(H) mm
- Plastic

**CA19-3****Enclosure 240 x 190 x 90mm**

- Dimensions: 240(L) x 190(W) x 90(H) mm
- Plastic

**CA60****Enclosure 300 x 220 x 120mm**

- Dimensions: 300(L) x 220(W) x 120(H) mm
- Plastic

**CN17****Enclosure or Utility Box**

- Dimensions: 124(L) x 103(W) x 34(H)mm
- General enclosure utility box
- Multiple mounting points
- Plastic

Buy Online!

24-hour access to 4500+ products

It's as easy as



CLICK



CART



DELIVERED



RECHARGEABLE. ROBUST. ALWAYS READY.

Lithium iron
phosphate batteries
with a 1-year limited
warranty



Feel like you need another hand?

We've got the solution for you.

Securi-Prod Magnetic
Door Holders



SLA Batteries

**BA02-2****Sealed Lead Acid (SLA) Battery 12V 1.3Ah**

- Dimensions: 97(L) x 43(W) x 58(H) mm

**BA03-2****Sealed Lead Acid (SLA) Battery 12V 12Ah**

- Dimensions: 151(L) x 98(W) x 101(H) mm

**BA04-2****Sealed Lead Acid (SLA) Battery 12V 18Ah**

- Dimensions: 181(L) x 77(W) x 167(H) mm

**BA05-2****Sealed Lead Acid (SLA) Battery 12V 2.3Ah**

- Dimensions: 178(L) x 35(W) x 67(H) mm

**BA06-2****Sealed Lead Acid (SLA) Battery 12V 25Ah**

- Dimensions: 175(L) x 166(W) x 125(H) mm
- Battery terminal bolts and nuts incl.

**BA07-2****Sealed Lead Acid (SLA) Battery 12V 40Ah**

- Dimensions: 197(L) x 165(W) x 170(H) mm
- Battery terminal bolts and nuts incl.

**BA09-2****Gel Battery 12V 8.0Ah**

- Dimensions: 151(L) x 65(W) x 101(H) mm

**BA10-2****Deep Cycle Battery 12V 100Ah**

- Dimensions: 329(L) x 172(W) x 217(H) mm

**BA11-2****Sealed Lead Acid (SLA) Battery 12V 3.0Ah**

- Dimensions: 134(L) x 68(W) x 66(H) mm

**BA12-2****Sealed Lead Acid (SLA) Battery 12V 4.5Ah**

- Dimensions: 90(L) x 70(W) x 107(H) mm

**BA13-2****Sealed Lead Acid (SLA) Battery 12V 7.2Ah**

- Dimensions: 151(L) x 65(W) x 101(H) mm

**BA18-2****Sealed Lead Acid (SLA) Battery 6V 4.5Ah**

- Dimensions: 70(L) x 47(W) x 107(H) mm

**BA33-2****Sealed Lead Acid (SLA) Battery 12V 33Ah**

- Dimensions: 195(L) x 130(W) x 178(H) mm
- Battery terminal bolts and nuts incl.

**BA38-2****Sealed Lead Acid (SLA) Battery 24V 3.5Ah**

- Dimensions: 185(L) x 73(W) x 70(H) mm
- DC Blue Digital GDO

Lithium Iron Batteries

**BA50-1****12V 7AH LifePO4 Battery**

- Dimensions: 151(L) x 65(W) x 95(H) mm
- New Lithium Iron Phosphate
- Built-in Battery Management System for Battery Protection

**BA50-6****12V 20AH LifePO4 Battery**

- Dimensions: 181(L) x 76(W) x 170(H) mm
- New Lithium Iron Phosphate
- Built-in Battery Management System for Battery Protection

**BA50-09****12V 50AH LifePO4 Battery**

- Dimensions: 260(L) x 168(W) x 211(H) mm
- New Lithium Iron Phosphate
- Built-in Battery Management System for Battery Protection

**BA50-12****12V 100AH LifePO4 Battery**

- Dimensions: 329(L) x 172(W) x 217(H) mm
- New Lithium Iron Phosphate
- Built-in Battery Management System for Battery Protection

**Regal
has been
working
hard on
transform-
ation**

We are now a B-BBEE
Level 3 contributor



VALUE-ADDED SERVICES



PRODUCT TRAINING



PRODUCT REPAIRS



TECHNICAL SUPPORT

CONTACT US

BRANCHES

Gauteng

Alberton:	087 537 4166
Balfour Park:	011 640 2288
Boksburg:	011 918 8505
Centurion:	012 653 0653
Edenvale:	011 453 0229
Fourways:	011 467 8817
Krugersdorp:	087 092 8100
Linden:	011 888 5666
Longmeadow:	011 454 8009
Lynnwood:	012 460 4550
Midrand:	011 312 7576
Montana:	087 802 3939
Rodepoort:	011 760 1149
Strijdom Park:	011 791 4770
Vanderbijlpark:	016 931 0116
Xavier (JHB South):	011 433 8943

Eastern Cape

East London:	043 735 4537
Gqeberha (PE):	041 364 3885

Free State

Bloemfontein:	051 447 6969
---------------	--------------

KwaZulu Natal

Durban:	031 263 0901
Pietermaritzburg:	087 803 4544
Pinetown:	031 701 3222

Mpumalanga

Emalaheni (Witbank):	013 656 4140
Mbombela (Nelspruit):	013 753 2831

Limpopo

Polokwane:	015 296 0531
------------	--------------

Western Cape

Bellville:	021 949 6330
George:	087 537 4155
Northgate:	021 510 1411
Sybrand Park:	021 697 4777

CUSTOMER SUPPORT

Accounts

Email: accounts@regalsecurity.co.za

Sales

Email: sales@regalsecurity.co.za

National Support Centre

Tel: 087 802 3920
Email: nsc.support@regalsecurity.co.za

Need Technical Support?

Call ANY Regal branch and dial 2

SCAN TO VIEW ALL
REGAL E-BROCHURES

